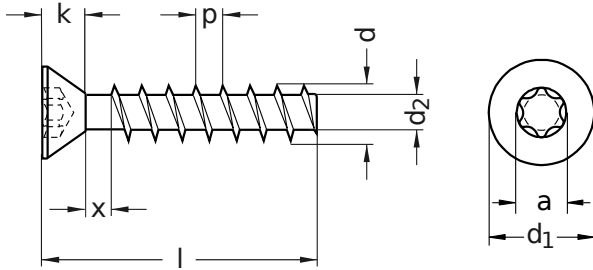


**B 52005**

**AMTEC® screws**

Countersunk head | hexalobular drive

Steel 10 | zinc-plated | Cr(VI)-free | Self-tapping thread



Diameter (d)	a max.	d <sub>1</sub> nominal size	d <sub>2</sub>			k nominal size	Pitch (P)	x max.	Tool size
			nominal size	min.	max.				
2.5	2.40	4.7	1.6	1.5	1.7	1.70	1.12	2.2	T8
3	2.40	5.5	2	1.9	2.1	1.80	1.35	2.8	T8
3.5	3.35	7.3	2.2	2.1	2.3	2.56	1.60	3.2	T15
4	3.95	8.4	2.4	2.3	2.5	2.90	1.80	3.6	T20

nominal size	Length (l)	
	min.	max.
8	7.25	8.75
10	9.25	10.75
12	11.10	12.90
16	15.10	16.90

Diameter (d)	Length (l)			
	8	10	12	16
2.5	●			
3	●	●	●	●
3.5		●	●	
4			●	●

• Combinations available in the eShop | Other sizes on request

All technical data refer to the measure mm

