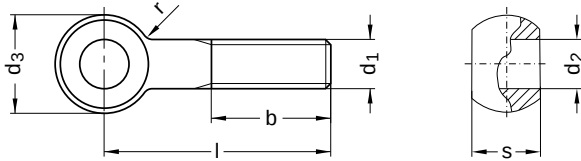


DIN 444
Eyebolts

Form B: product class B

Steel 4.6 | zinc-plated | Cr(VI)-free | Metric thread



Diameter (d)	b			d ₂		d ₃		r			s		Pitch (P)
	l up to 125	l up to 200	l longer than 200	min.	max.	min.	max.	nominal size	min.	max.	min.	max.	
M6	18	–	–	6	6.03	13.57	14	4	3.0	6	6.85	7	1.00
M8	22	28	–	8	8.04	17.57	18	4	3.0	6	8.85	9	1.25
M10	26	32	–	10	10.04	19.48	20	4	3.0	6	11.82	12	1.50
M12	30	36	49	12	12.04	24.48	25	6	4.5	9	13.82	14	1.75
M16	38	44	57	16	16.04	31.38	32	6	4.5	9	16.82	17	2.00
M20	46	52	65	18	18.04	39.38	40	6	4.5	9	21.79	22	2.50

nominal size	Length (l)	
	min.	max.
30	29.35	30.65
40	39.20	40.80
50	49.20	50.80
60	59.05	60.95
70	69.05	70.95
80	79.05	80.95

nominal size	Length (l)	
	min.	max.
90	88.90	91.10
100	98.90	101.10
110	108.90	111.10
120	118.90	121.10
130	128.75	131.25
140	138.75	141.25

nominal size	Length (l)	
	min.	max.
160	158.75	161.25
180	178.75	181.25
200	198.55	201.45

Diameter (d)	Length (l)														
	30	40	50	60	70	80	90	100	110	120	130	140	160	180	200
M6	●	●	●												
M8	●	●	●	●	●	●	●	●							
M10		●	●	●	●			●							
M12			●	●	●	●		●							
M16				●	●	●	●	●	●	●	●	●	●	●	●
M20						●	●	●	●	●		●		●	●

• Combinations available in the eShop | Other sizes on request

All technical data refer to the measure mm

