

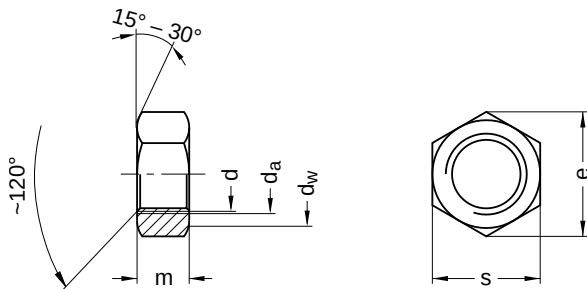
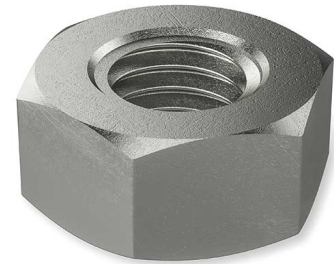
DIN 934 similar to ISO 4032

Hexagon nuts

External hex

Stainless steel A4 | Cr(VI)-free | Metric thread

Further information: DIN-standard has been withdrawn | changed spanner widths for M10, M12, M14 and M22 | the fine thread has been transferred to ISO 8673



Diameter (d)	d _a		d _w	e	m		s		Pitch (P)	Tool size
	min.	max.			min.	max.	min.	max.		
M1.4	1.4	1.60	2.1	3.28	0.95	1.2	2.90	3.0	0.30	SW 3
M1.6	1.6	1.84	2.4	3.41	1.05	1.3	3.02	3.2	0.35	SW 3,2
M2	2.0	2.30	3.2	4.32	1.35	1.6	3.82	4.0	0.40	SW 4
M2.5	2.5	2.50	4.1	5.45	1.75	2.0	4.82	5.0	0.45	SW 5
M3	3.0	3.45	4.5	6.01	2.15	2.4	5.32	5.5	0.50	SW 5,5
M3.5	3.5	4.00	5.0	6.58	2.55	2.8	5.82	6.0	0.60	SW 6
M4	4.0	4.60	5.8	7.66	2.90	3.2	6.78	7.0	0.70	SW 7
M5	5.0	5.75	6.8	8.79	3.70	4.0	7.78	8.0	0.80	SW 8
M6	6.0	6.75	8.8	11.05	4.70	5.0	9.78	10.0	1.00	SW 10
M8	8.0	8.75	11.3	14.38	6.14	6.5	12.73	13.0	1.25	SW 13
M8 x 1	8.0	8.75	11.3	14.38	6.14	6.5	12.73	13.0	1.00	SW 13
M10	10.0	10.80	15.3	18.90	7.64	8.0	16.73	17.0	1.50	SW 17
M10 x 1	10.0	10.80	15.3	18.90	7.64	8.0	16.73	17.0	1.00	SW 17
M12	12.0	13.00	17.2	21.10	9.64	10.0	18.67	19.0	1.75	SW 19
M12 x 1.25	12.0	13.00	17.2	21.10	9.64	10.0	18.67	19.0	1.25	SW 19
M12 x 1.5	12.0	13.00	17.2	21.10	9.64	10.0	18.67	19.0	1.50	SW 19
M14	14.0	15.10	20.2	24.49	10.30	11.0	21.67	22.0	2.00	SW 22
M14 x 1.5	14.0	15.10	20.2	24.49	10.30	11.0	21.67	22.0	1.50	SW 22
M16	16.0	17.30	22.2	26.75	12.30	13.0	23.67	24.0	2.00	SW 24
M16 x 1.5	16.0	17.30	22.2	26.75	12.30	13.0	23.67	24.0	1.50	SW 24
M18	18.0	19.50	25.3	29.56	14.30	15.0	26.16	27.0	2.50	SW 27
M18 x 1.5	18.0	19.50	25.3	29.56	14.30	15.0	26.16	27.0	1.50	SW 27
M20	20.0	21.60	28.2	32.95	14.90	16.0	29.16	30.0	2.50	SW 30
M20 x 1.5	20.0	21.60	28.2	32.95	14.90	16.0	29.16	30.0	1.50	SW 30
M20 x 2	20.0	21.60	28.2	32.95	14.90	16.0	29.16	30.0	2.00	SW 30
M22	22.0	23.70	29.5	35.03	16.90	18.0	31.00	32.0	2.50	SW 32
M22 x 1.5	22.0	23.70	29.5	35.03	16.90	18.0	31.00	32.0	1.50	SW 32
M24	24.0	25.90	33.2	39.55	17.70	19.0	35.00	36.0	3.00	SW 36
M24 x 1.5	24.0	25.90	33.2	39.55	17.70	19.0	35.00	36.0	1.50	SW 36
M24 x 2	24.0	25.90	33.2	39.55	17.70	19.0	35.00	36.0	2.00	SW 36

All technical data refer to the measure mm



DIN 934 similar to ISO 4032

Hexagon nuts

External hex

Stainless steel A4 | Cr(VI)-free | Metric thread

Diameter (d)	d _a		d _w	e	m		s		Pitch (P)	Tool size
	min.	max.			min.	max.	min.	max.		
M27	27.0	29.10	38.0	45.20	20.70	22.0	40.00	41.0	3.00	SW 41
M27 x 1.5	27.0	29.10	38.0	45.20	20.70	22.0	40.00	41.0	1.50	SW 41
M27 x 2	27.0	29.10	38.0	45.20	20.70	22.0	40.00	41.0	2.00	SW 41
M30	30.0	32.40	42.7	50.65	22.70	24.0	45.00	46.0	3.50	SW 46
M30 x 2	30.0	32.40	42.7	50.65	22.70	24.0	45.00	46.0	2.00	SW 46
M33	33.0	35.60	46.6	55.37	24.70	26.0	49.00	50.0	3.50	SW 50
M36	36.0	38.90	51.1	60.79	27.40	29.0	53.80	55.0	4.00	SW 55
M36 x 1.5	36.0	38.90	51.1	60.79	27.40	29.0	53.80	55.0	1.50	SW 55
M36 x 3	36.0	38.90	51.1	60.79	27.40	29.0	53.80	55.0	3.00	SW 55
M39	39.0	42.10	55.9	66.44	29.40	31.0	58.80	60.0	4.00	SW 60
M42	42.0	45.40	60.6	71.30	32.40	34.0	63.10	65.0	4.50	SW 65
M45	45.0	48.60	64.7	76.95	34.40	36.0	68.10	70.0	4.50	SW 70
M48	48.0	51.80	69.4	82.60	36.40	38.0	73.10	75.0	5.00	SW 75
M52	52.0	56.20	74.2	88.25	40.40	42.0	78.10	80.0	5.00	SW 80

All technical data refer to the measure mm

