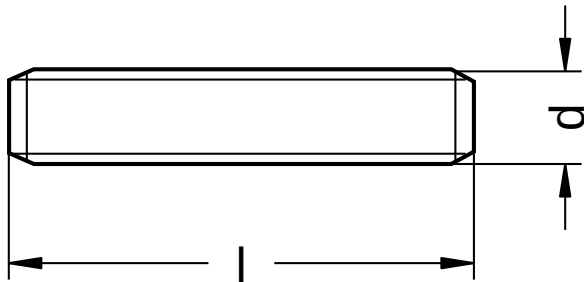


**DIN 976 B**

**Stud bolts**

Form A: thread end with tip

Steel 4.8 | zinc-plated | Cr(VI)-free | Metric thread



Diameter (d)	Pitch (P)
M10	1.50
M12	1.75

nominal size	Length (l)	
	min.	max.
40	39.5	40.5
50	49.5	50.5
60	59.4	60.6
70	69.4	70.6
80	79.4	80.6
90	89.3	90.7

nominal size	Length (l)	
	min.	max.
100	99.3	100.7
120	119.3	120.7
150	149.2	150.8

Diameter (d)	Length (l)									
	40	50	60	70	80	90	100	120	150	
M10	●	●	●	●	●	●	●			
M12		●	●	●		●	●	●	●	

• Combinations available in the eShop | Other sizes on request

All technical data refer to the measure mm

