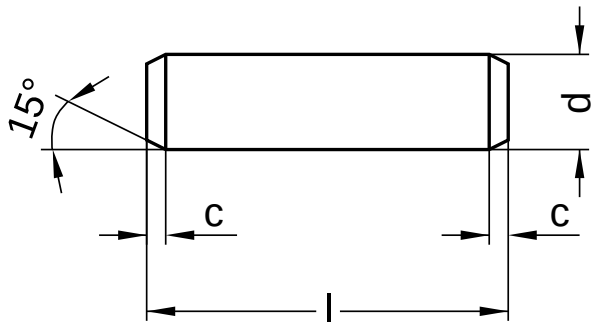


ISO 2338 similar to DIN 7

Parallel pins

Steel | bright | Cr(VI)-free



Diameter (d)	c
1.5	0.30
2	0.35
3	0.50
4	0.63
5	0.80
6	1.20
8	1.60
10	2.00
12	2.50
16	3.00
20	3.50
30	5.00

nominal size	Length (l)	
	min.	max.
5	4.75	5.25
6	5.75	6.25
8	7.75	8.25
10	9.75	10.25
12	11.50	12.50
14	13.50	14.50
16	15.50	16.50
18	17.50	18.50
20	19.50	20.50
22	21.50	22.50
24	23.50	24.50
26	25.50	26.50
28	27.50	28.50
30	29.50	30.50

nominal size	Length (l)	
	min.	max.
32	31.50	32.50
35	34.50	35.50
36	35.50	36.50
40	39.50	40.50
45	44.50	45.50
50	49.50	50.50
55	54.25	55.75
60	59.25	60.75
70	69.25	70.75
80	79.25	80.75
85	84.25	85.75

All technical data refer to the measure mm



ISO 2338 similar to DIN 7

Parallel pins

Steel | bright | Cr(VI)-free

Diameter (d)	Length (l)																									
	5	6	8	10	12	14	16	18	20	22	24	26	28	30	32	35	36	40	45	50	55	60	70	80	85	
1.5	●																									
2			●				●																			
3	●		●	●		●	●	●			●															
4		●	●	●			●		●				●	●												
5				●	●		●		●				●	●		●		●	●	●						
6				●	●	●	●	●			●		●	●			●	●								
8				●		●	●	●	●		●		●	●	●			●		●	●	●				
10							●		●	●	●	●	●	●	●				●	●	●		●			
12									●		●	●	●		●								●			
16																		●	●	●		●				
20																		●				●				
30																								●	●	

● Combinations available in the eShop | Other sizes on request

All technical data refer to the measure mm

