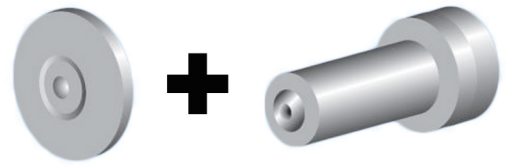


## RIVKLE® Tooling kit standard

### RIVKLE® measuring toolkit for the RIVKLE® force controller FC340:

- For blind rivet nuts
- Washer and nut

Technical information can be found on the last page.



| Diameter<br>(d) | Article number |
|-----------------|----------------|
| M 3             | 28252214103    |
| M 4             | 28252214104    |
| M 5             | 28252214105    |
| M 6             | 28252214106    |
| M 8             | 28252214108    |
| M 10            | 28252214110    |
| M 12            | 28252214112    |
| M 14            | 28252214114    |
| M 16            | 28252214116    |

All technical data refer to the measure mm

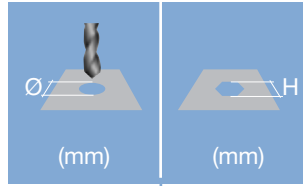




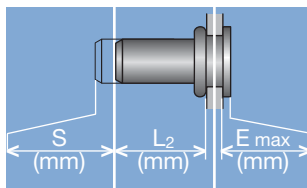
**Head diameter**  
**Overall length**  
**Thread size**



**Grip range**  
 Defines the range of total thickness of the customers part (even if it consists of more than one layer)



**Hole geometry**  
 If round → diameter  
 If hexagonal → width across flats

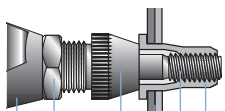


**Head projection after setting**  
 Variable according to the application (setting load, material substrate, etc.)

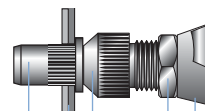
**Blind side projection after installation**  
 Defines the clearance needed on the blind side (cannot be used for quality control)

**Setting stroke**  
 Difference of total length before and after installation

**RIVKLE® Nut**



**RIVKLE® Stud**



- RIVKLE®
- Mandrel\*
- Customers part
- Anvil\*
- Counter nut
- Setting tool

\*in accordance to chosen RIVKLE®\*

All technical data refer to the measure mm

